



TEARLACH

LEADING THE CHARGE

TSXV: **TEA** | OTC: **TELHF**

@tearlachltd



May 2023



@tearlachltd

Key Personnel



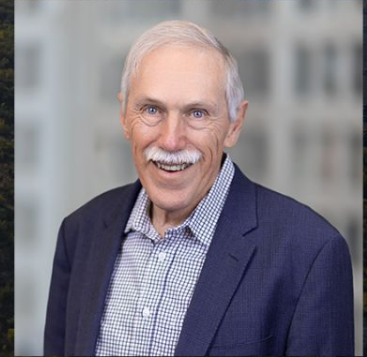
Charles Ross
Interim CEO/Director

Mr. Ross has more than 30 years experience in the international resources sector, focusing on operational execution, corporate structure and financial management. He previously served as director, president and chief financial officer.



Julie Selway
VP of Exploration

Dr. Selway is a globally recognized expert on lithium pegmatites and pegmatite exploration techniques and has co-authored over 20 scientific journal articles on pegmatites. Julie recently supervised the exploration program at Case Lake Property in Ontario, which included 162 drill holes and 15,000 m.



Lindsay Bottomer
Director

Mr Bottomer is a geological consultant with over 45 years of experience in international mining exploration and development. He has overseen and managed exploration at some of the biggest mines currently recorded, including the Oyu Tolgoi mine in Mongolia (Entree Gold) and the Ann Mason Cu Mo porphyry in Nevada (Hudbay)

Driving Shareholder Value Through Exploration and M&A



6

Assets

Hand selected by proven explorers located next to mining's most prolific resources

100

Years Experience

Led by a strong management team who have been credited for multiple discoveries

300b

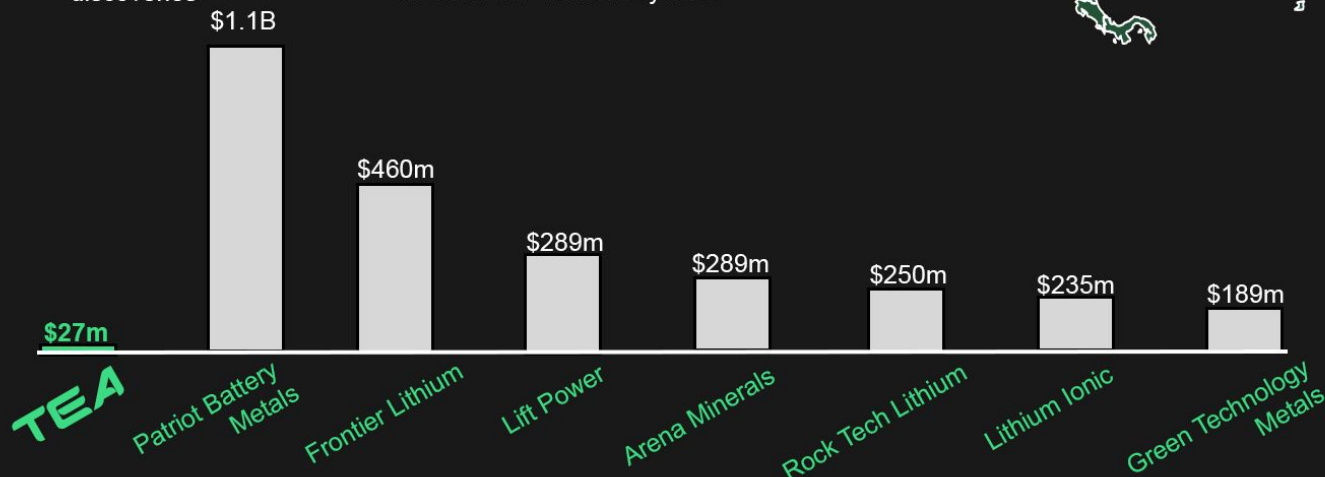
Lithium Demand

The Lithium industry needs roughly \$300 billion of investment in order to meet the demand by 2030



Trading Symbol | TSXV: **TEA**
OTC: **TELHF**

Shares Outstanding | **83,550,000**



Responsible Mining



Environment

- **Strict Standards**
Follow the highest environmental standards
- **Reducing Impact**
Minimize environmental impact by leveraging eco-friendly equipment and processes



Social

- **People**
Ensure safety and well being of workforce while creating a culture emphasizing equality.
- **Green Technology**
Working to discover and produce battery metals to fuel a greener world

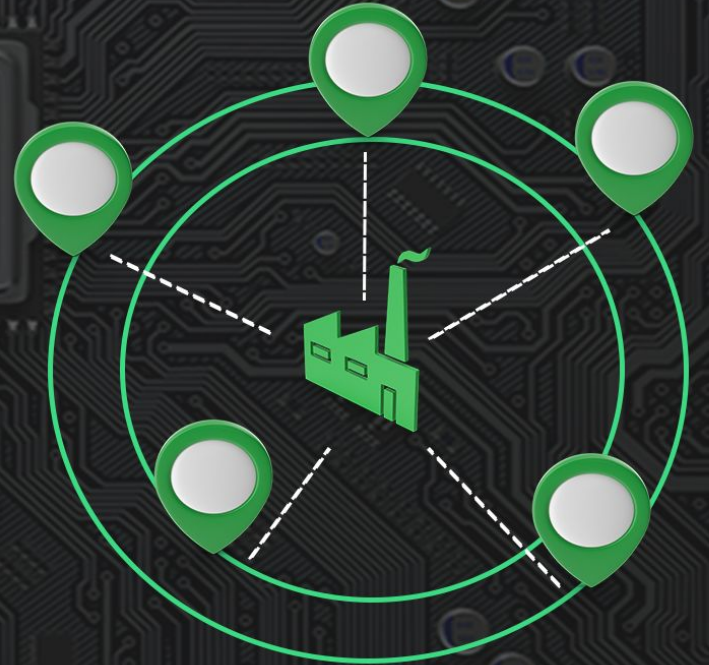


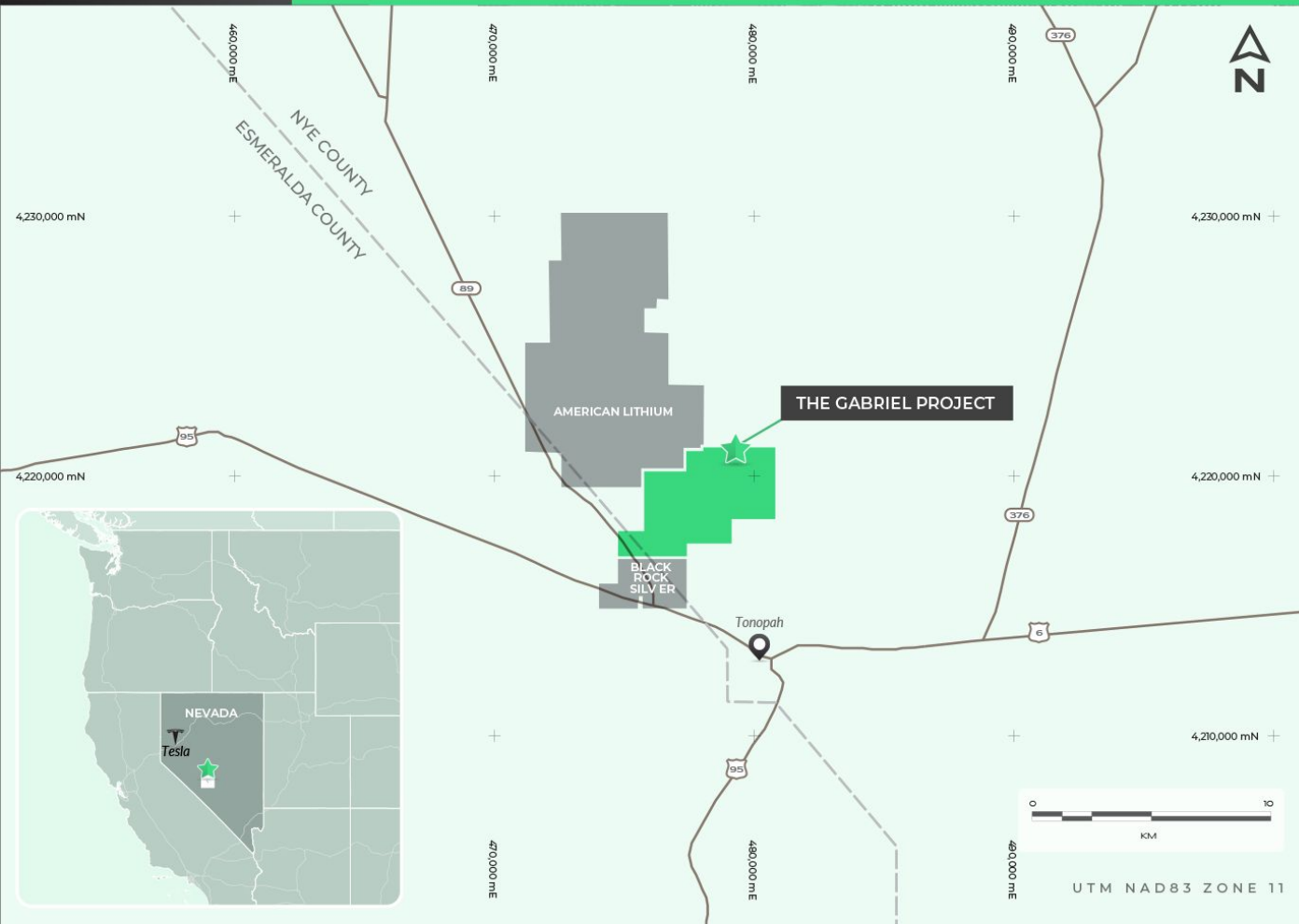
Governance

- **Corporate Governance**
Create and uphold extensive corporate policies to ensure ethical conduct
- **Transparency**
Commit to strict and concise disclosure policies to align with shareholders and provide insight to the Company's direction

Hub & Spoke Model

- Providing a forward thinking solution to the Lithium supply constraints
- Long term scale potential with shared Operating costs and capital costs
- To be located in a centralized jurisdiction relative to Tearlach's properties
- Become the Premier Lithium Exploration and Production company with Experts in all aspects of Lithium





NEVADA USA

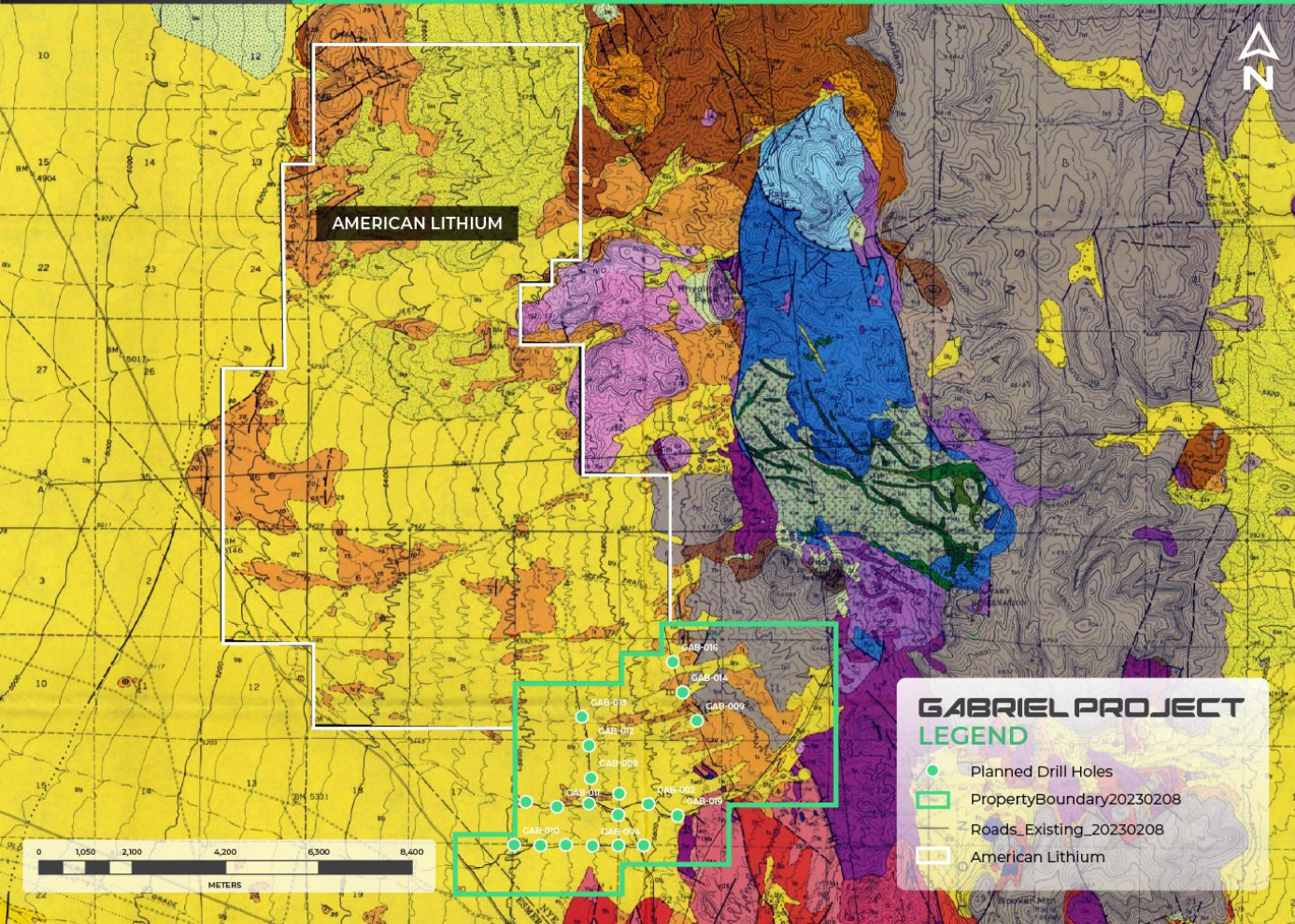
- ***JV with Blackrock Silver (TSX: BRC)***
- ***Located north of Tonopah, Nevada***
- ***Beside and Surrounded by The top 5 lithium resources in the USA***
- ***Adjacent to American Lithium's TLC Deposit***

American Lithium's TLC Project Mineral Resource:

- **Measured 4.2 Mt LCE, 860 Mt at 924 ppm Li**
 - **Indicated 4.63 Mt LCE, 1192 Mt at 727 ppm Li**
 - **Inferred 1.86 Mt LCE, 486 Mt at 713 ppm Li**
- LCE is Lithium Carbonate Equivalent**

Source: <https://americallithiumcorp.com/tlc-lithium-project/>

The source of TLC Property resource estimate is American Lithium Corp. press release dated Dec. 1, 2022. The Qualified Person has not verified the TLC resource estimate. The TLC resources are reported here to indicate that the regional geology has potential to host lithium mineralization. Mineralization on the TLC property



GABRIEL PROJECT LEGEND

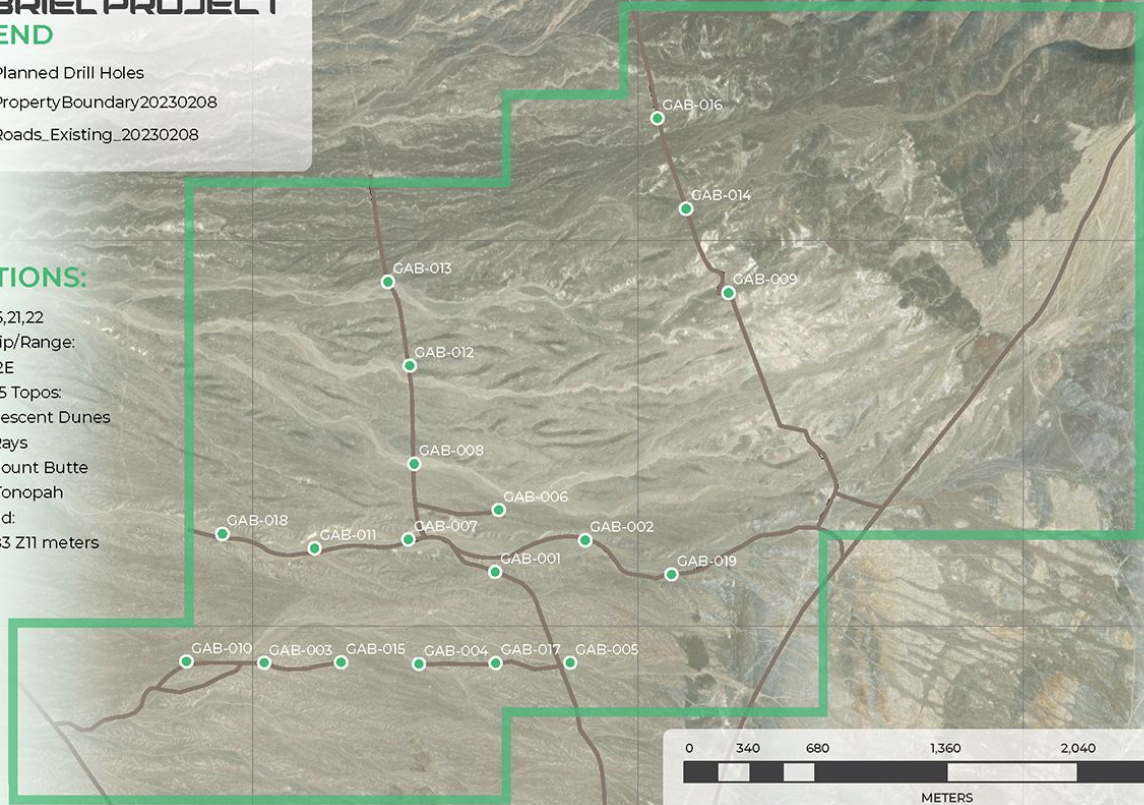
- Planned Drill Holes
- PropertyBoundary20230208
- Roads_Existing_20230208
- American Lithium

GABRIEL PROJECT LEGEND

- Planned Drill Holes
- Property Boundary 20230208
- Roads_Existing_20230208

SECTIONS:

9,10,16,15,21,22
Township/Range:
T3N R42E
USGS 7.5 Topos:
SE1/4 Crescent Dunes
SW1/4 Rays
NE1/4 Mount Butte
NW1/4 Tonopah
UTM Grid:
NAD-083 Z11 meters



Source: Esri, Maxar, GeoEye, Earthstar Geographics, CNES/Airbus DS, USDA, USGS, AeroGRID, IGN, and the GIS User Community

Phase 1 Drilling

Completed 01.06.23

**Drilled a total of 1,200 m
across 11 drill holes**

**Strong Lithium grades
ranging from;
- 550 ppm to 1,460 ppm Li**

**Robust intercepts
identified on the property
of up to 44m**

**Geologic setting indicates
additional exploration
potential**

GABRIEL TIMELINES

Blackrock Asset

- 70% ownership in the Lithium mining rights with Blackrock Gold Corp (TSXV: BRC)

High Grade Li

- Documented Lithium values of up to 1,217 ppm Li over 1.5m (T22-012)

Robust Mineralization

- Average thickness of lithium-bearing zones of 28.1 meters

Neighbouring Deposit

- Bordering American Lithium's (TSXV: Li) high grade deposit

Nevada, USA

Project Timelines

2023 Exploration

- On-site exploration
- Identify drill targets

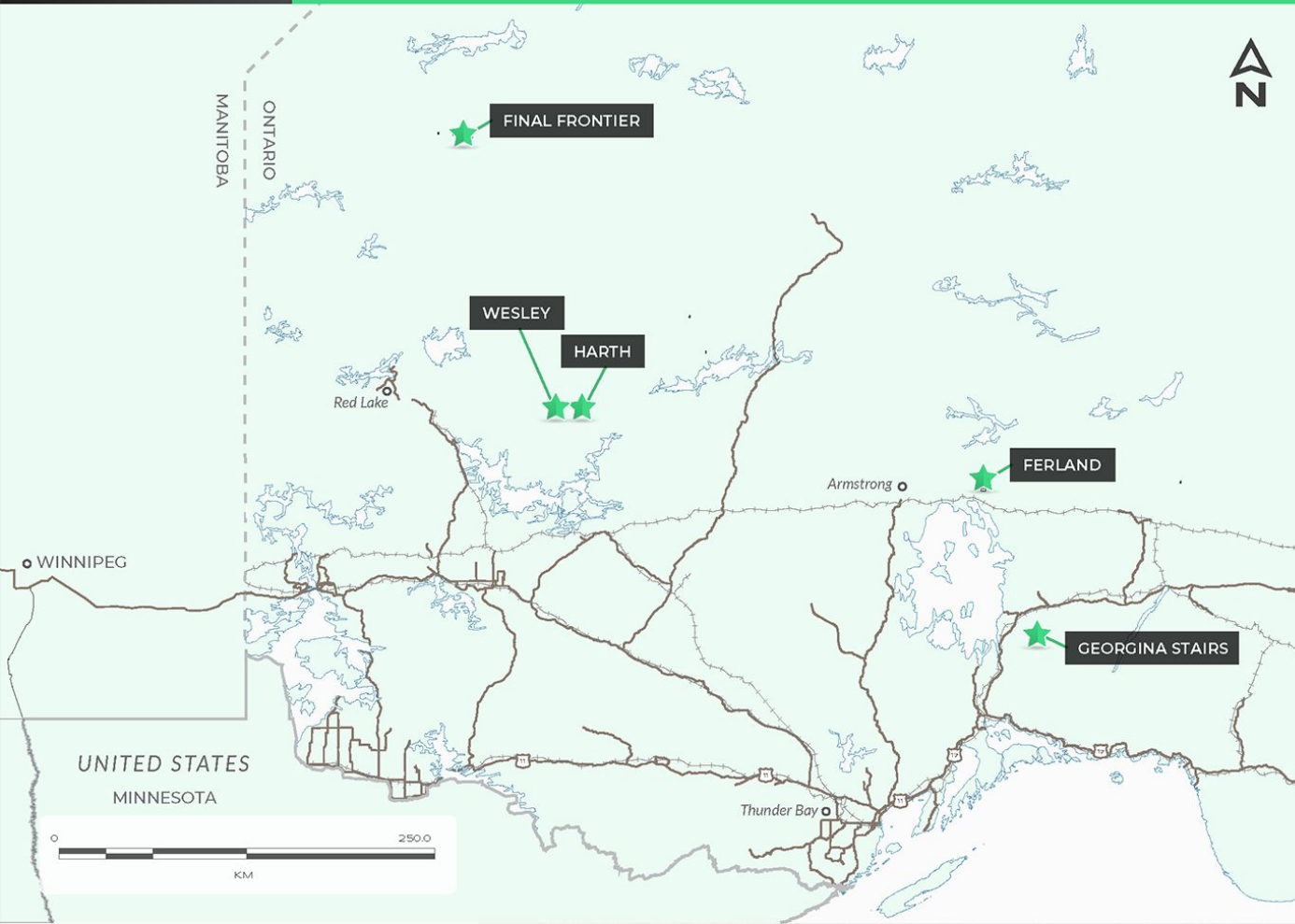
2024 Definition Drilling

- Targetted drilling surrounding projects prospective regions

2025 PEA & Permitting

- Identify resource & economics
- Begin permit application

2026 - 2028 Production Planning



ONTARIO
Canada

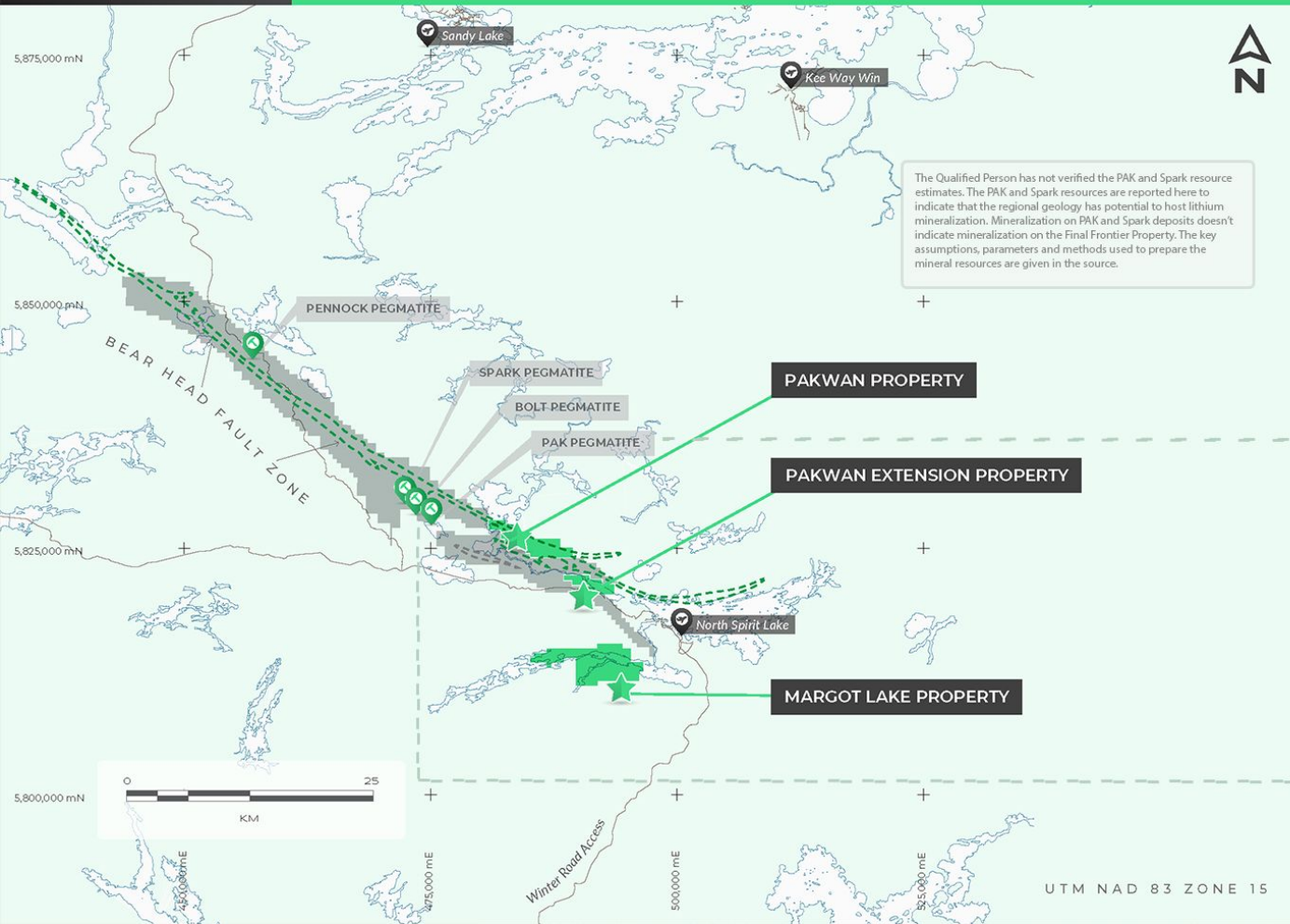
Tearlach has 3 assets in Ontario:

- *Final Frontier*
- *Georgina Stairs*
- *New Frontier*



ONTARIO Canada

- **Located North of Red Lake, Ontario**
- **Same geological setting as Frontier Lithium's PAK Deposit**
- **Winter road/fly-in access**
- **Near Frontier Lithium's PAK Deposit**



Frontier Lithium's PAK deposit open pit and underground:

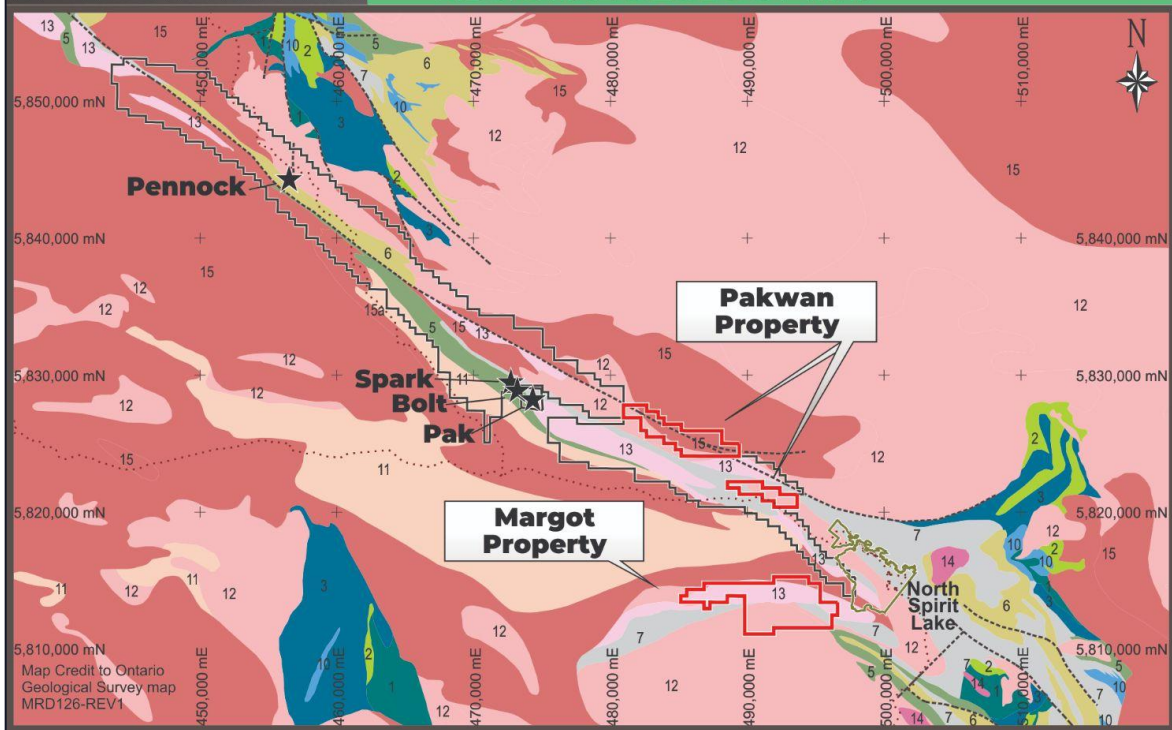
- Measured and indicated categories of 7.23 MT at an average grade of 1.87 % Li₂O
- Inferred category of 2.76 MT at an average grade of 2.22 % Li₂O
- The source of the PAK resource estimate is Frontier Lithium Inc., NI 43-101 Technical Report, PAK Property, PAK, Red Lake Mining District, Ontario, Canada, prepared by BBA, dated April 9, 2021.

Frontier Lithium's Spark deposit open pit mineral resource:

- Indicated category of 14.4 MT averaging 1.40 % Li₂O
- Inferred category of 18.1 MT averaging 1.37 % Li₂O
- The source of the Spark resource estimate is Frontier Lithium Inc. press release dated March 1, 2022.



THE FINAL FRONTIER PROJECT REGIONAL GEOLOGY MAP



NEO- TO MESOARCHEAN

Granitoids

- 15 Massive granodiorite to granite
- 14 Diorite-monzodiorite-granodiorite suite
- 13 Muscovite-bearing granitic rocks
- 12 Foliated tonalite suite
- 11 Gneissic tonalite suite
- 10 Mafic and ultramafic rock

Supracrustal Rocks

- 7 Metasedimentary rocks
- 6 Felsic to intermediate metavolcanic rocks
- 5 Mafic to intermediate metavolcanic rocks

MESOARCHEAN

Supracrustal Rocks

- 3 Mafic metavolcanic and metasedimentary rocks
- 2 Felsic to intermediate metavolcanic rock
- 1 Metasedimentary rocks and mafic to ultramafic metavolcanic rocks

- Winter Road
- Fault
- Other company property location
- Tearlach Resources Ltd. Property Location

0 10km 20km

UTM NAD 83 Zone 18N

FINAL FRONTIER TIMELINES

Project Timelines

2023 Exploration

- On-site exploration
- Identify drill targets

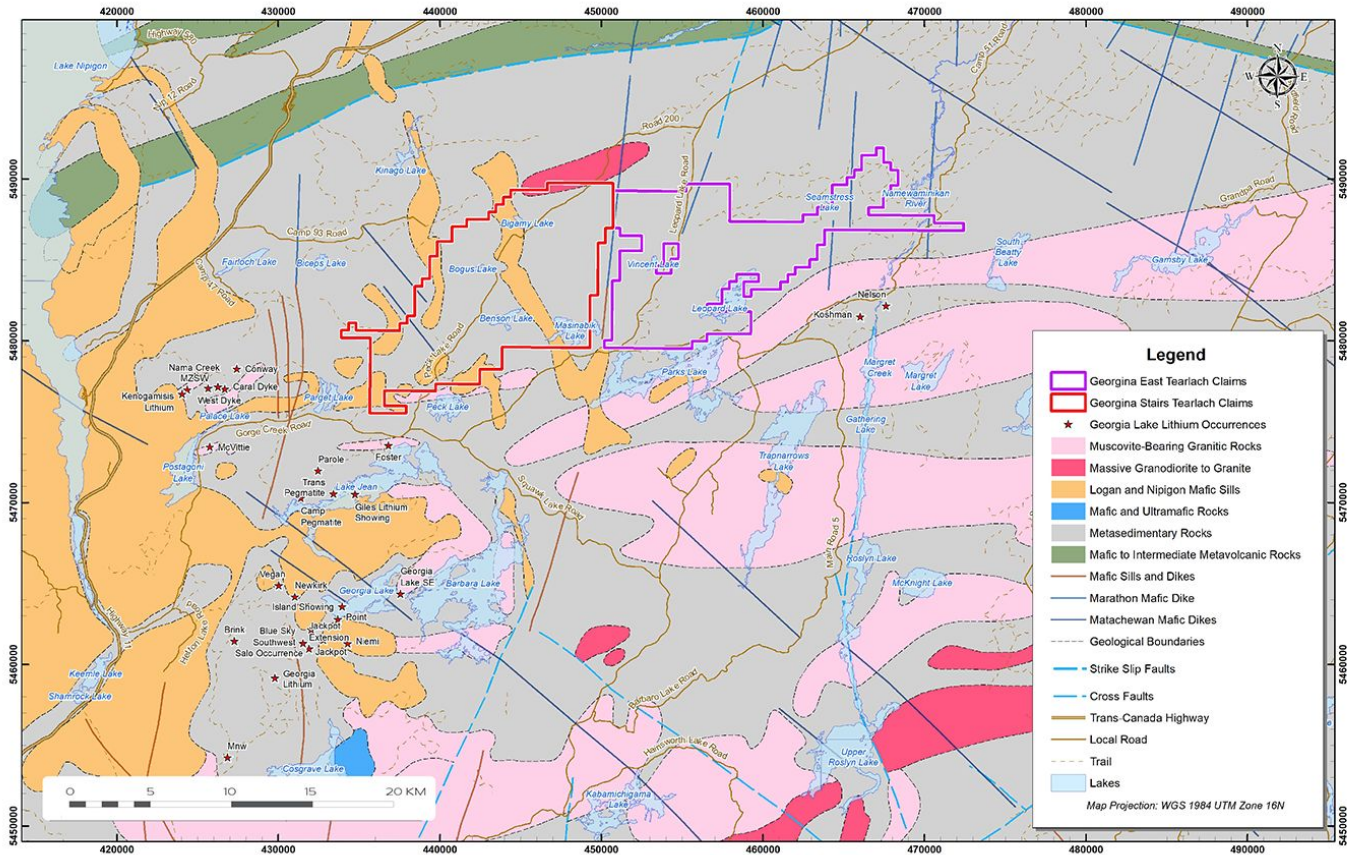
2024 Definition Drilling

- Targetted drilling surrounding projects prospective regions

2025 PEA & Permitting

- Identify resource & economics
- Begin permit application

2026 - 2028 Production Planning



ONTARIO
Canada

- Newly staked 26 km X 12 km property, 22,900 ha
- Roads connect to Trans Canada Highway #11
- Same geology as Georgina Lake pegmatite field



Project Timelines

2023 Exploration

- On-site exploration
- Identify drill targets

2024 Definition Drilling

- Targetted drilling surrounding projects prospective regions

2025 PEA & Permitting

- Identify resource & economics
- Begin permit application

2026 - 2028

Production Planning

Ontario Canada

Wesley Lithium

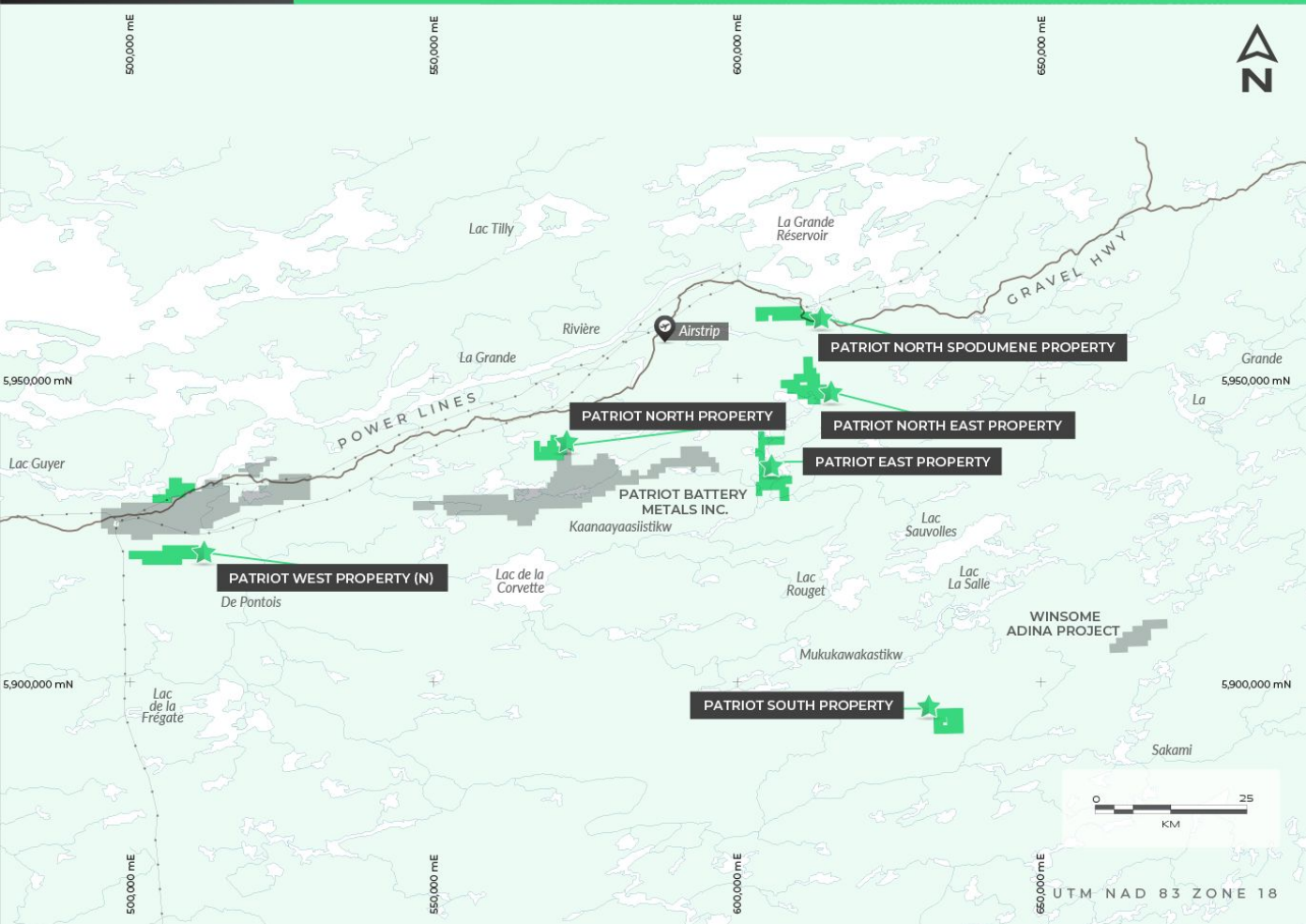
- 3,250 ha within the Sharpe Lake Batholith
- Several pegmatites discovered North of project
- Initial work program to consist of mapping and sampling with follow on drilling

Harth Lithium

- 2,350 ha within the Sharpe Lake Batholith

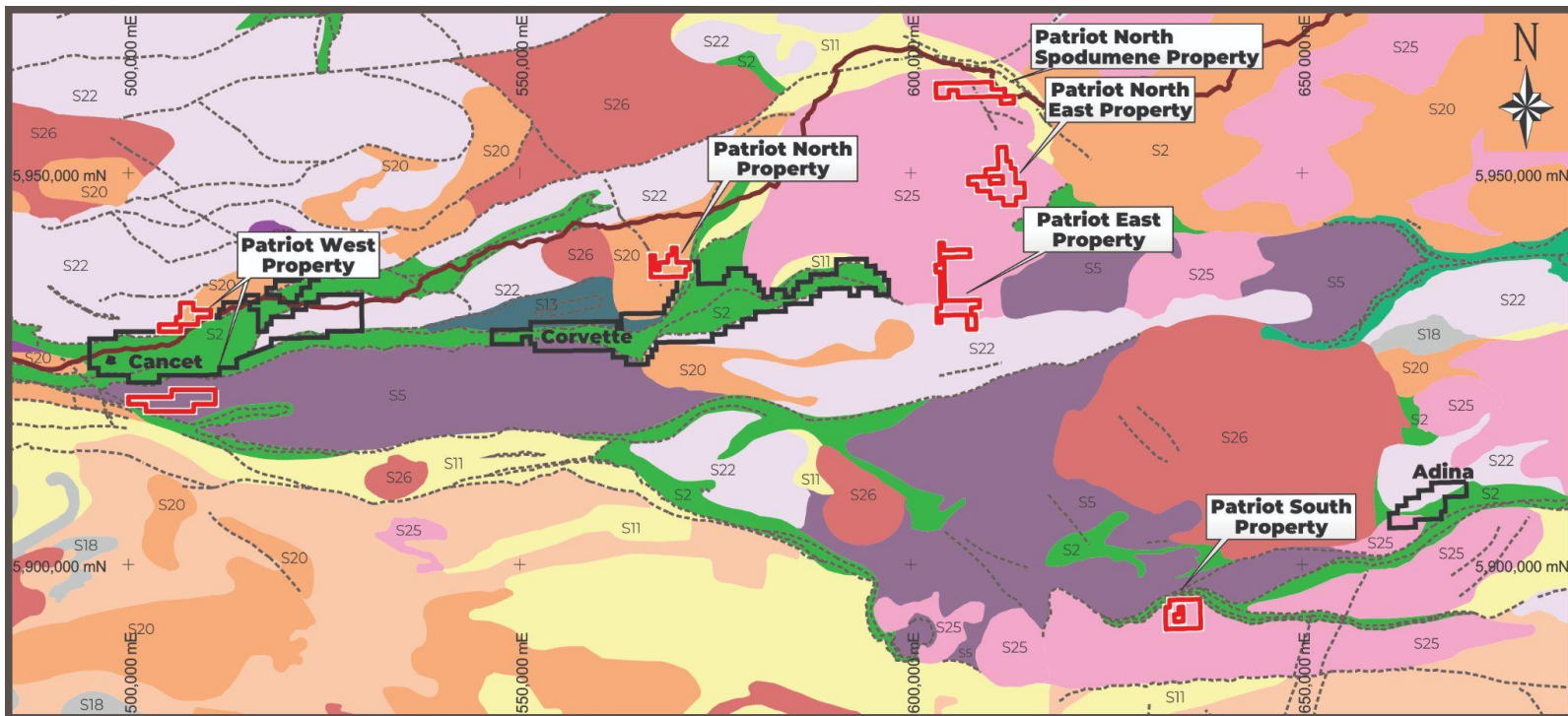
Ferland Station

- Tearlach Oct '22 mapping identified two pegmatite outcrops - Neighbouring Green Technology Metals Seymour Lake lithium deposit
- Road accessible and rail nearby



Quebec Canada

- ***Patriot West is adjacent to Winsome's Cancet Property***
- ***Patriot North is adjacent to Patriot Battery Metals' Corvette Property***
- ***Access to the area is via the Trans Taiga Road and fly-in***
- ***Power Lines are close the properties.***



PALEOPROTEROZOIC

S32 Quartz arenite, sandstone, arkose, conglomerate and mudrock

NEOARCHEAN

Granitoids

S26 Granite, monzogranite, syenogranite, granodiorite and

S25 Granodiorite, granite, tonalite, monzodiorite and monzonite

S22 Tonalite, trondhjemitic, granodiorite, granite, diorite and tonalitic gneiss

S20 Diorite, monzodiorite, monzonite, syenite, and felsic intrusive rocks

S19 Diatexite, metatexite and undifferentiated migmatite

S18 Tonalitic, dioritic, granitic and granodioritic gneiss

Mafic to Ultramafic Rocks

S15 Pyroxenite, peridotite, dunite, hornblende, serpentinite, websterite, clinopyroxenite, carbnatite and mafic and ultramafic sills

Sedimentary Rocks

S11 Paragneiss, migmatitic paragneiss, schist, metawacke, quartzite, iron FM., metatexite and diatexite

S14 Wacke, mudrock, sandstone, conglomerate, iron formation and arenite

S13 Conglomerate

Volcanic Rocks

S8 Amphibolite, mafic gneiss, metabasalt and undifferentiated mafic to intermediate rocks

MESOARCHEAN

S5 Tonalite, diorite, quartz diorite and granodiorite

S4 Tonalitic to dioritic gneiss

S2 Metavolcanic and metasedimentary rocks

--- Fault

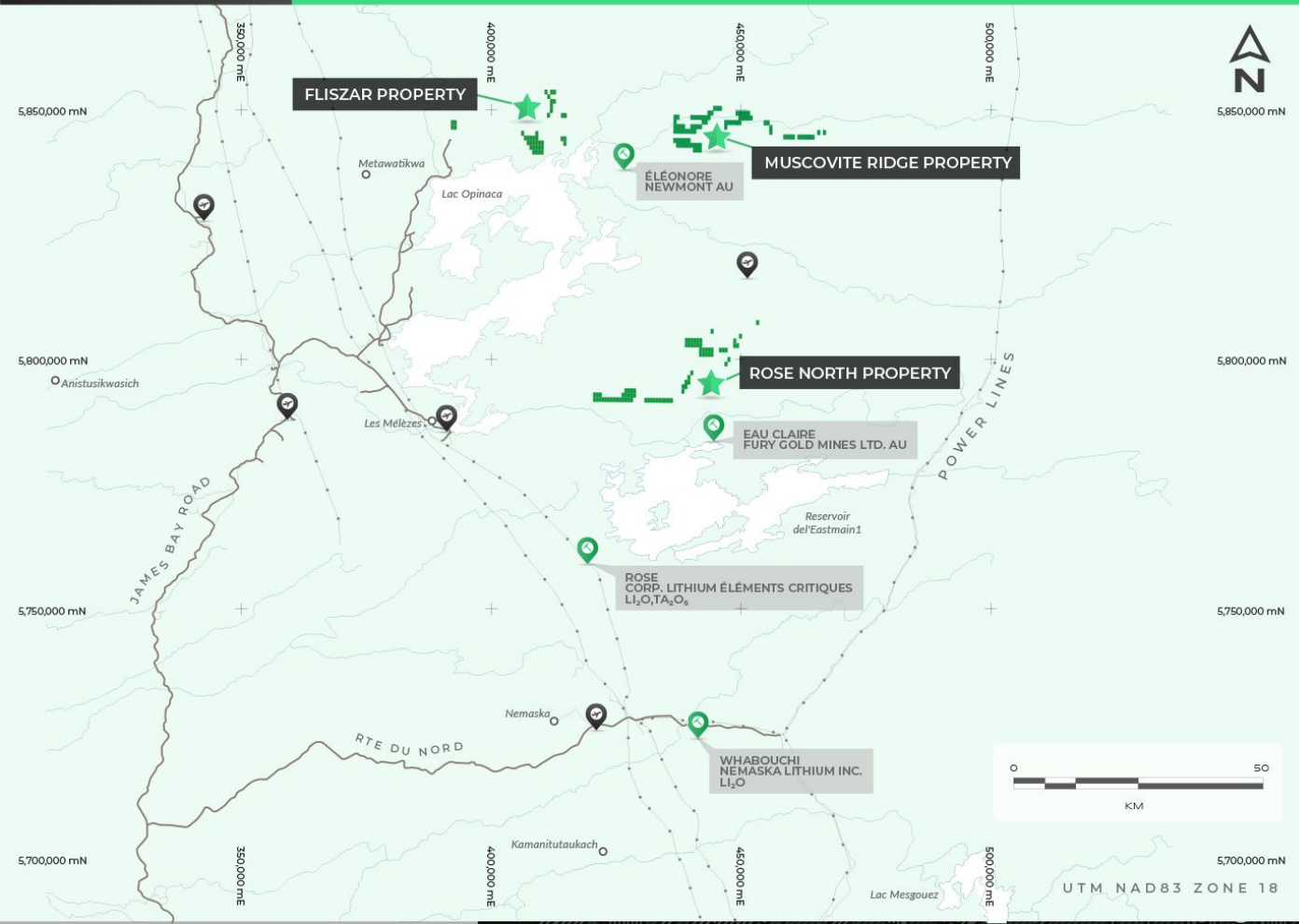
□ Tearlach Resources Ltd. Property Location

□ Other company property location

0 25
kilometres
UTM NAD 83 Zone 18N

Shelby Area Regional Geology Map



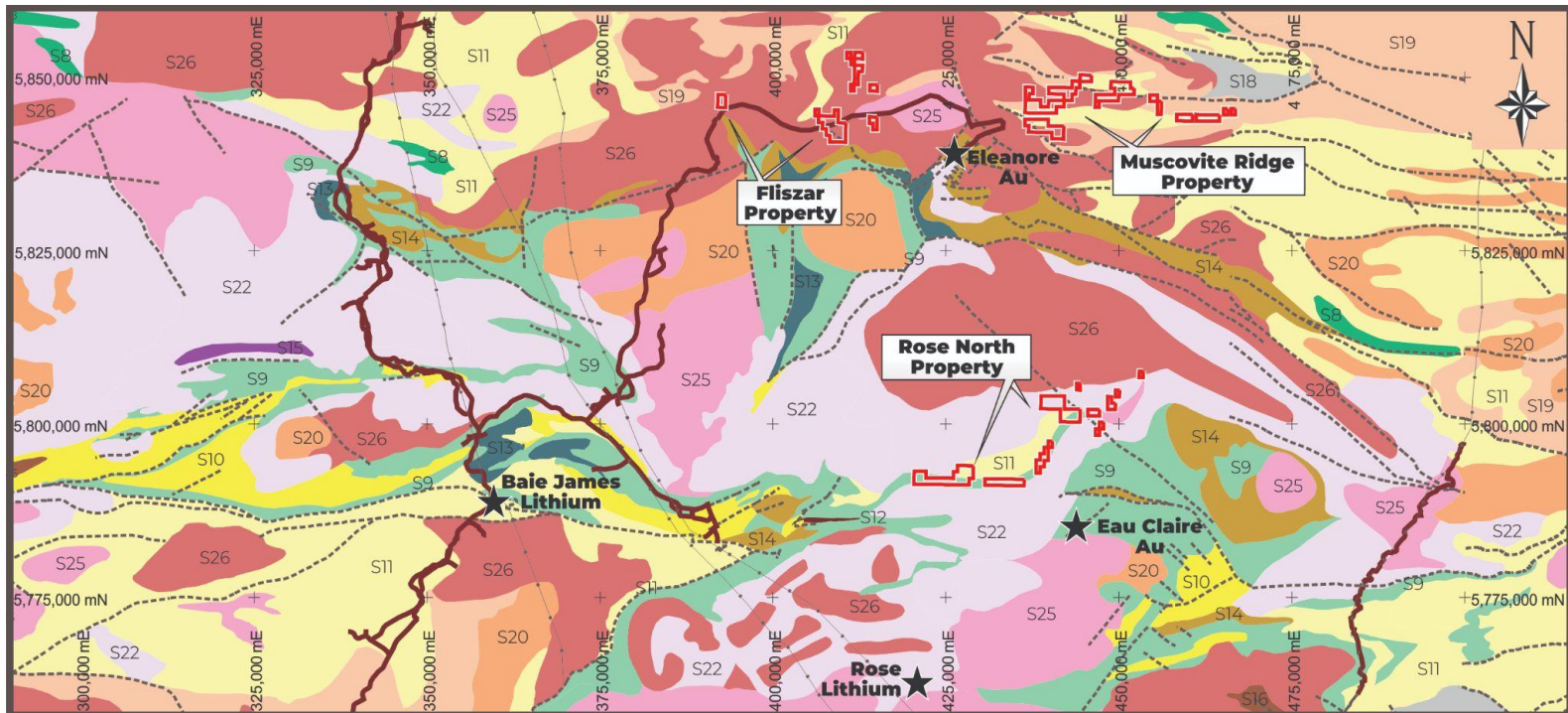


- **Newmont Mining's Eleonore underground gold mine is located between the Fliszar and Muscovite Ridge Properties.**

- **The Rose North property is located 15 km north of Fury Gold Mines's Eau Claire gold project.**

- **Access to the area is via the James Bay Road and fly-in**

- **Power Lines are close the properties.**



NEOARCHAIC

Granitoids

- S26 Granite, monzogranite, syenogranite, granodiorite and
- S25 Granodiorite, granite, tonalite, monzodiorite and monzonite
- S22 Tonalite, trondhjemite, granodiorite, granite, diorite and tonalitic gneiss
- S20 Diorite, monzodiorite, monzonite, syenite, and felsic intrusive rocks

- S19 Diatexite, metatexite and undifferentiated migmatite
- S18 Tonalitic, dioritic, granitic and granodioritic gneiss

Mafic to Ultramafic Rocks

- S16 Gabbro, gabbro-norite, diorite, norite, anorthosite and ultramafic rocks
- S15 Pyroxenite, peridotite, dunite, hornblende, serpentinite, websterite, clinopyroxenite, carbnatite and mafic and ultramafic sills
- S14 Wacke, mudrock, sandstone, conglomerate, Fe Fm. and arenite

Sedimentary Rocks

- S14 Wacke, mudrock, sandstone, conglomerate, iron formation and arenite
- S13 Conglomerate
- S12 Iron formation

- S11 Paragneiss, migmatitic paragneiss, schist, metawacke, quartzite, iron FM., metatexite and diatexite

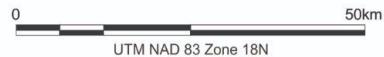
Volcanic Rocks

- S10 Felsic volcanic and volcanoclastic rocks

- S9 Basalt, andesite, mafic to felsic volcanoclastic rocks, amphibolite, gabbro and sedimentary rocks

- Fault
- Tearlach Resources Ltd. Property Location
- Other company property location

Map Credit to G. Roy & K O'Brien, 2023



Rose Fliszar Muscovite Project
Regional Geology Map

QUEBEC PROJECT TIMELINES

Project Timelines

2023 Exploration

- On-site exploration
- Identify drill targets

2024 Resource Estimate

- Leverage assays to identify maiden resources

2025 Definition Drilling

- 3,000m diamond drill program
- Targetted prospective zones

2023 Drilling

- est. 3,500m diamond drill program
- Permitting and planning

2024 Engineering

- Complete technical reports and begin permit requirements for Lithium production

2026 - 2028

Production Planning

Meet the Team

Ray Strafehl Tearlach | Director

Mr. Strafehl was a former stock exchange trader, investment advisor and registered Commodity Trading Advisor for more than 20 years. He served several public mining companies in roles as president, director, and corporate relations over the past 15 years.



Redline Resources
CEO

Manage and execute the Company's ambition to explore and acquire domestic Gold assets.



NickelOne Resources
Director

Oversee management's execution at the Company's Ontario asset.



Noresmont Mining
Director
Guide management and the development of the Company's Choquelimpie asset in Northern Chile

John Bean Tearlach | Director

Mr. Bean is a CPA, CA with extensive experience in capital markets, strategic planning, and corporate governance. He has served on the board of directors and acted as a CFO of companies spanning from cannabis, real estate and technology.



AURORA
Aurora Cannabis
CFO

Mr. Bean oversaw ACB's finances during its first two years as a public company, overseeing the Company's renowned growth from \$100-million to a multi-billion market cap

David Flint Tearlach | Director

Mr. Flint has successfully led the Gabriel exploration team in advancing the Company's Nevada project. He previously directed exploration programs that significantly increased the Hycroft Mine published reserves by 10 million ounces of gold and 450 million ounces of silver.



Tearlach Resources
Responsible for developing and exploring the Gabriel Project in Nevada



Allied Nevada Gold
VP Exploration
Helped drive a significant increase to the Hycroft mine by 10M oz Au.

Meet the Team

Win Rowe Tearlach | Advisor

Mr. Rowe, an economic geologist with over 47 years of diversified experience in the mining and exploration industries, has a track record of accomplishing innovative approaches and breakthrough advances in exploration, discoveries, and reserve expansions. He has held management positions at companies such as Hanna, Freeport, Coeur d'Alene, Pegasus, and X-Cal Resources.



Ryan Weymark Tearlach | Advisor

Mr. Weymark is the former Vice President of Technical Evaluation for NexGen Energy, a publicly traded company with a market cap of \$3B, where he supported various corporate and technical initiatives. Previously, Mr. Weymark worked in a variety of project management and engineering roles with Ledcor Contractors Ltd., Teck Resources Ltd., and SNC-Lavalin Inc.



Marc Enright-Morin Tearlach | Advisor

Mr. Morin is a seasoned businessman and Vancouver-based entrepreneur who has assisted various public and private companies raise over \$300 Million (CAD) through various institutions, with a focus in Europe, Asia, and the United States. He has served as CEO, President, and director of several public issuers in the resource and technology sectors.



Disclaimer

No stock exchange, securities commission or other regulatory authority has approved or disapproved the information contained in this presentation. This presentation includes certain forward looking statements. All statements other than statements of historical fact, included in this presentation, including without limitation statements regarding potential mineralization exploration results, and future plans and objectives of Tearlach Resources are forward looking statements that involve various risks and uncertainties. There can be no assurance that forward looking statements will prove to be accurate, and actual results and future events could differ materially from those anticipated in such statements. Important factors that could cause actual results to differ materially from Tearlach. Expectations include, among others, the actual results of current exploration activities, uncertainties relating to the interpretation of drill results, other exploration data and the geology, grade and continuity of mineral deposits, and changes in projects parameters as plans continue to be refined as well as future commodity prices. Although Tearlach Resources has attempted to identify important factors that could cause actual results to differ materially, there may be other factors that cause results not to be as anticipated, estimated or intended. There can be no assurance that such statements will prove to be accurate as actual results and future events could differ materially from those anticipated in such statements.

The technical information in this presentation has been reviewed and approved by Julie Selway, Ph.D., P.Geo who is a Qualified Person in accordance with NI 43-101 reporting standards.



118 mi
69%



Contact Us

ir@tearlach.ca
604-688-5007

